

# Thread Painted Landscapes Woodlands

## 6 hour On-site Workshop

### Nancy Prince

**Workshop Description:** My thread painted landscapes have been student's favorites for many years. Using my anyone-can-do-it approach, you will learn how simple thread painting is. A zigzag or straight stitch are the only stitches necessary to create amazing thread painted designs. A printed photograph will be supplied for the workshop to boost your confidence right away. No artistic skill is needed so come join us for a day full of fun.

#### **Thread Painting Thread** – 40 weight rayon or polyester

- Large trunk & small distant trees – dark, medium and light brown; medium rust; medium taupe
- Overhanging bough – medium mustard green; medium light mustard green
- Foreground, and center greenway & canopies on small trees – Dark, medium & light olive;
- Flowers – bright yellow; bright orange
- Bring additional 40 weight threads in rayon, polyester or cotton in greens and browns – the more threads to choose from the better
- 60 weight bobbin thread in white and black

***NOTE:** The dark olive for the foreground needs to be really dark to give the project form and to denote shading. The project will not turn out as well as you would like without a dark olive. Blue/green or Christmas green does not work well on this project*

#### **Notions**

- 6" wooden or plastic machine embroidery hoop (*available for sale in workshop*)
- Basic sewing supplies – scissors, 80/12 and 60/8 or 70/10 machine needles, tweezers, seam ripper, etc.
- Empty bobbin
- Sewing machine
  - *Please know how your machine works and make sure it is in good working order before class. For thread painting you will need to know how to drop the feed dogs, how to adjust your machine for free-motion machine embroidery, how to change the upper tension and know where to change the width on the zigzag stitch. If you are unsure of these machine adjustments, please check with your machine dealer before class. A solid sewing platform is recommended. You will need a zigzag throat plate. Thanks for checking this out before class.*
- **Open** toe free motion foot such as #24 for Bernina or a stippling open toe foot for Viking. It is important to see what you are stitching and where the next stitches are going so select the best foot you can for visibility. Visibility on machines with a clear oval plastic foot is practically zero. Cutting away between the two red lines on this type foot works on most machines. Check with your machine dealer for optional free motion feet.
- Black permanent ultra fine point marker
- Embroidery or extra bobbin case (only if you have one)
- Knee lift (only if you have one)

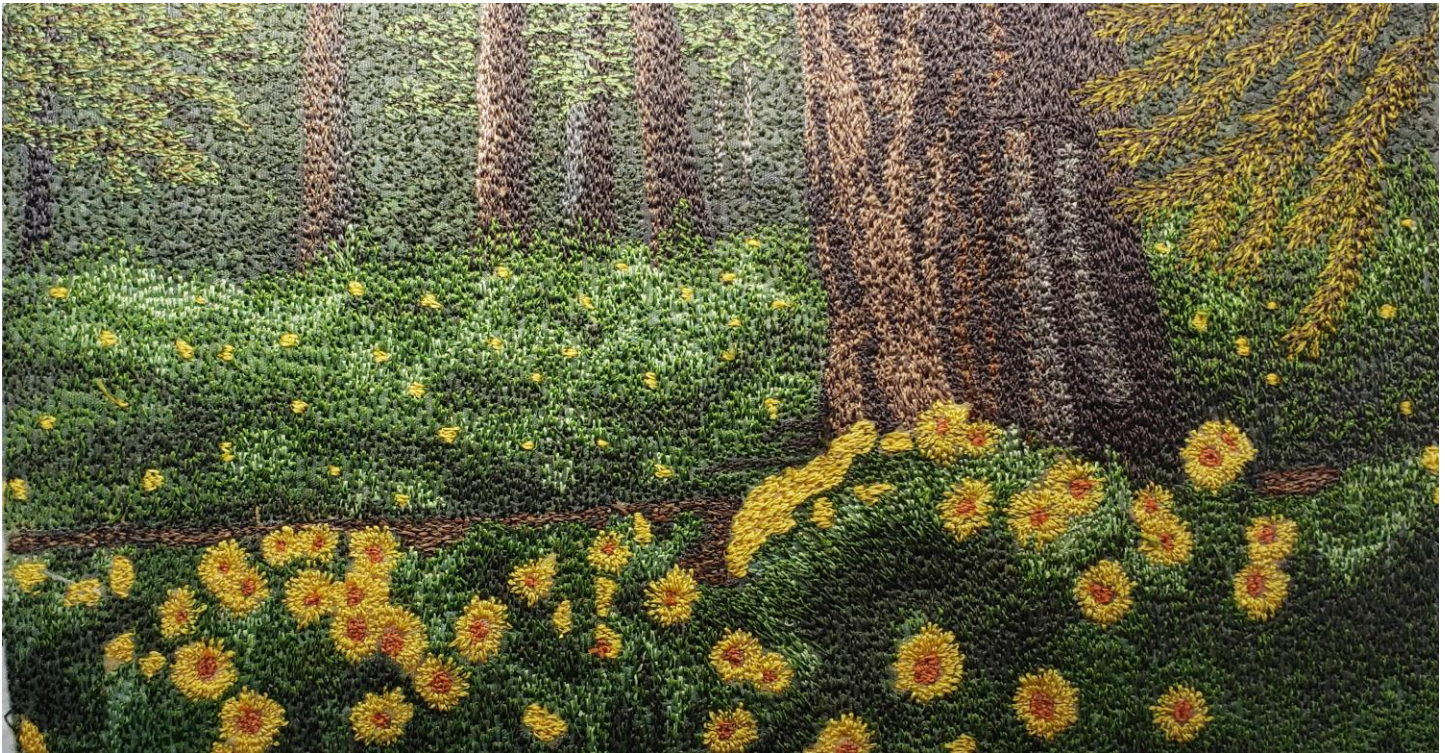
Workshop Kit Fee: **\$15.00**

**Kit includes:** Printed background fabric; 3 pieces of stabilizer; instructional booklet

Items available for sale the day of workshop\*:



- \$11.00 – 6” wooden hoop



*NOTE: The project for the workshop can be seen on my website, [www.nancyprince.com](http://www.nancyprince.com), under the on-site Workshop section, Thread Painted Landscapes Woodlands*

To view my free video demonstrating the difference between a straight and zigzag stitch go to [www.nancyprince.com](http://www.nancyprince.com) and at the Home page, scroll down to *Thread Painted Stitches*



Examples of free motion feet from left:

1. Bernina #24
2. Janome or Baby Lock
3. Pfaff