

Thread Stories – Secret Garden
8 Hour **Open Enrollment** Workshop
Workshop will be conducted over two 4 hour days
Nancy Prince

Workshop Description: This workshop starts with a custom painted fabric background. A printed stabilizer overlays the background and will guide you from section to section to assure a successful project. Specific thread colors are paramount for a successful product so this workshop comes with an optional thread kit of the necessary colors. This workshop also includes both thread painting techniques I use so you will get an overall view of both of Nancy's techniques. Come join me for two 4 hours of fun, laughter and hopefully learn some thread painting techniques along the way.

NOTE: The correct olive green and yellow thread colors are paramount for the success of this project and thus the reason for the optional 15 spool thread kit. Thread spools are regular sized spools and not pre-wound for this workshop.

Thread for Student to Bring if Purchasing the Optional Thread Kit

Thread Painting Thread – choose either 40 weight polyester or rayon

- **Brown plant and mulch** –An assortment of four to six shades of brown from a dark brown to a light brown; also have on hand some rusty brown colors for contrast
- **Flowers** – Medium blue, medium bright orange, white, lavender, greenish/gold

*Thread for Student to Bring if **NOT** Purchasing the Optional Thread Kit*

Thread Painting Thread – choose either 40 weight polyester or rayon

- **Brown plant and mulch** –An assortment of four to six shades of brown from a dark brown to a light brown; also have on hand some rusty brown colors for contrast
- **Flowers** – Medium blue, medium orange, 4-6 shades orchid from dark, dark orchard to pale orchid, lavender, dark purple
- **Yellow shrub** – 3 shades of yellow from medium yellow to a pale yellow, white
- **Shrubs, hedge, foreground greens** – Bring 8-10 olive green threads from very dark to pale olive; 2-3 shades of blueish green, 2-3 shades of greenish/gold

Thread & Notions for ALL Students to Bring

- 80 weight Quilters Select -Pre-wind (1) bobbin each with a light and dark thread OR 60 weight Superior's Bottom Line bobbin thread (***can be purchased on my website***)
- 6" wooden or plastic machine embroidery hoop (***can be purchased on my website***)
- White or yellow marker, paper scissors

NOTE: There is a mandatory kit for this workshop that includes everything required for the workshop EXCEPT for all thread listed above and a 6" hoop. You must order the kit at least 7 days in advance of the workshop for east coast and central USA to allow for shipping USPS First Class Package - Retail. Choose Priority for west coast students at 1 week to allow for shipping. The kit will be shipped directly to you. Go to www.nancyprince.com; click on Workshops and Lecturers; click on Open enrollment; scroll down to the chosen workshop and click on Purchase Workshop Kit.

Appropriate hoops



Plastic

Wooden

Workshop Kit is mandatory and must be ordered 7 days in advance of the workshop for US students

Workshop fee and Kit: \$99.00

Workshop Kit includes: (2) pieces of printed stabilizer; (5) pieces of stabilizer backing; (2) pieces of tulle; custom printed background; (instructional booklet; practice products

Excludes shipping

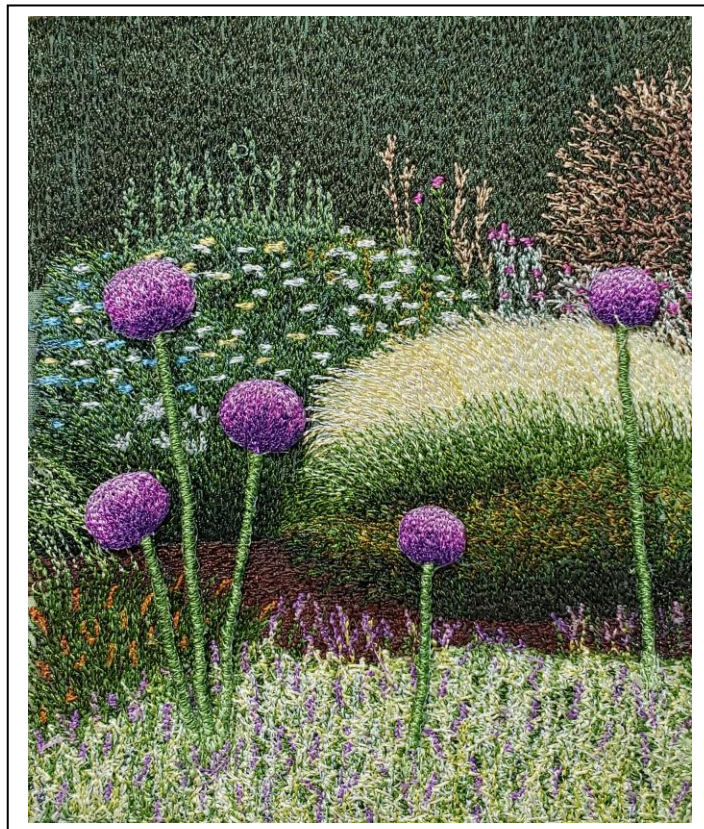
Optional but recommended 15 spool thread kit - \$62

Notions

- Basic sewing supplies – machine scissors, 80/12 and 90/14 (optional) Microtex sharp or topstitch machine needles, tweezers, seam ripper, pins, etc.
- Sewing machine
 - *Please know how your machine works and make sure it is in good working order before class. For thread painting you will need to know how to drop the feed dogs, how to adjust your machine for free-motion machine embroidery, how to change the upper tension and know where to change the width on the zigzag stitch. If you are unsure of these machine adjustments, please check with your machine dealer before class. A solid sewing platform is recommended. You will need a zigzag throat plate. Thanks for checking this out before class.*
- **Open** toe free motion foot from left in photo: Bernina, Janome or Baby Lock and Pfaff. Visibility on machines with a clear oval plastic foot is practically zero. Cutting away between the two red lines on this type foot works well. Check with your machine dealer for optional free motion feet.
- Black permanent ultra-fine point marker
- High tension or embroidery bobbin case (only if you have one)
- Knee lift (only if you have one)



Free-motion feet



Completed project